

USER MANUAL for USB Data Link

USB Data Link

Overview

The USB Data Link cable is your fast solution to peer-to-peer file transfer between two computers via the USB port. The USB Data Link provides true plug-n-play capability while transferring files at much greater speed than traditional file transfer products via serial or parallel port, more than 6Mbps can be achieved. In most applications, the user will get greater than 4Mbps of smooth file transfer rate. The application program, a Windows Program Manager-like user interface, provides a very easy to use environment that makes file transfer as easy as drag-and-drop. All you need is just simply plug in the USB Data Link by doing a one-time installation of the program.

Features

- Transfer files between two PCs
- Full compliance with the Universal Serial Bus Specification Version 1.1
- USB full speed connection
- Dual data buffer supporting two-way data transfer
- Low power consumption
- Support suspend and resume for power management
- Support remote wake-up
- Bus powered from either USB port
- Suitable for mobile PC environment

System Requirements

- Windows 98/SE/2000/ME/XP
- Mac OS V. 8.6 or above, excluding OS X

Installation for USB Data Link

Simply plug the USB Data Link into the USB port of your computer. The computer will detect this new hardware, and then please follow the steps below for easy driver installation.

- **Driver Installation Under Win 98 / 98 SE / ME (Page 2 ~ Page 7)**
- **Driver Installation Under Win 2000 / XP (Page 8 ~ Page 14)**

Program Uninstallation

You can uninstall the USB Data Link application program and driver by running Add/Remove Programs in Settings/Control Panel and follow the on-screen instructions to complete the process.

USER MANUAL for USB Data Link

Driver Installation Under Win 98 / 98 SE / ME

1. Windows detect new hardware and searches for new drivers for “USB Device”. Click **Next**.



Figure 1

2. Select “Search for the best driver for your device (Recommended)”. Click **Next**



Figure 2

USER MANUAL for USB Data Link

3. Select “Specify a location”. Then **Browse** for “PC Data Link driver (V1.6)” in the driver. Click **OK**. Back to the window as Figure 3. Click **Next**.



Figure 3

4. See Figure 4 which says “Windows driver file search for the device: USB Bridge Cable”. Click **Next**.

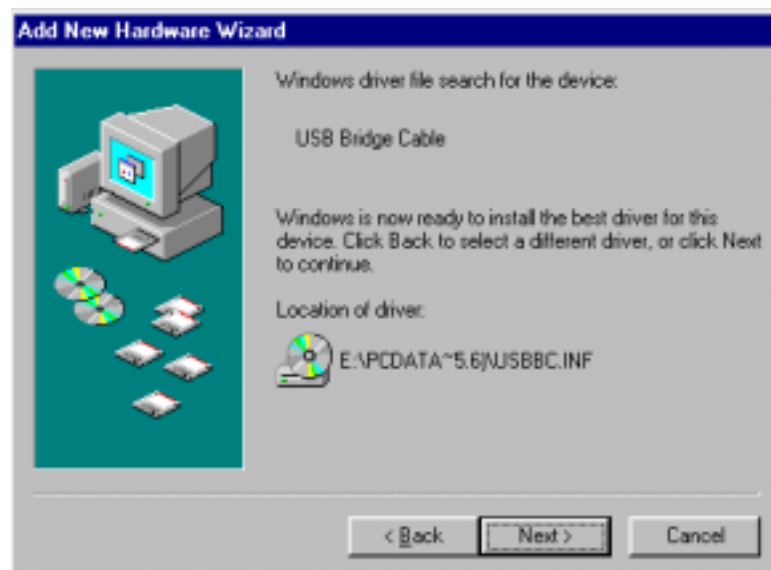


Figure 4

USER MANUAL for USB Data Link

5. See Figure 5 which says “Windows has finished installing the software that your new hardware device requires”. Click **Finish**.



Figure 5

6. After step 5, the welcome page of InstallShield Wizard shows up right away, as Figure 6. Click **Next**.

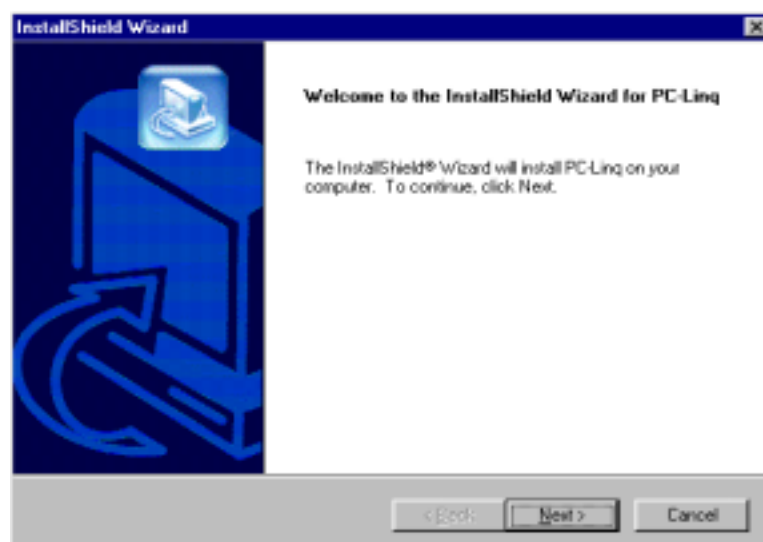


Figure 6

USER MANUAL for USB Data Link

7. The “Choose Destination Location” window appears, as Figure 7. Normally the Destination Folder will be “C:\Program Files\PC-Linq”. Click **Next**.

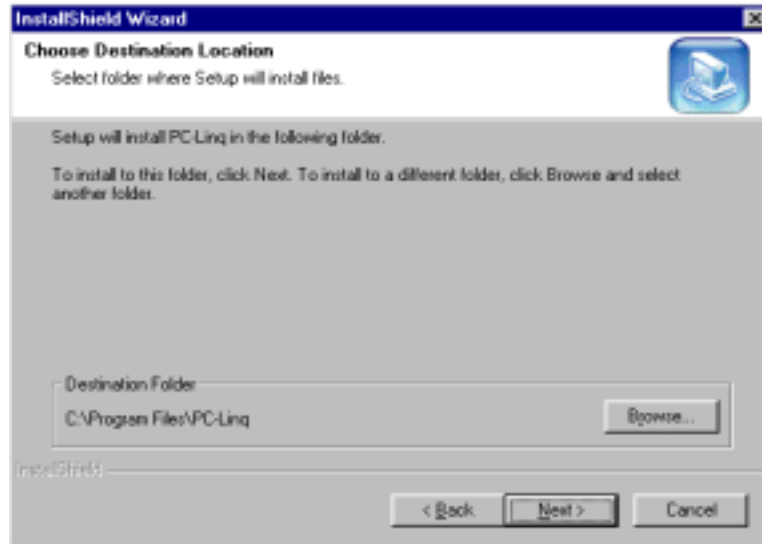


Figure 7

8. As Figure 8, the default Program Folders will be “PC-Linq”. If you choose the default “Accessories” as Existing Folders, and click **Next**, you will be able to find the PC-Linq file in the Programs folder when you click “Start” at the table of your computer.

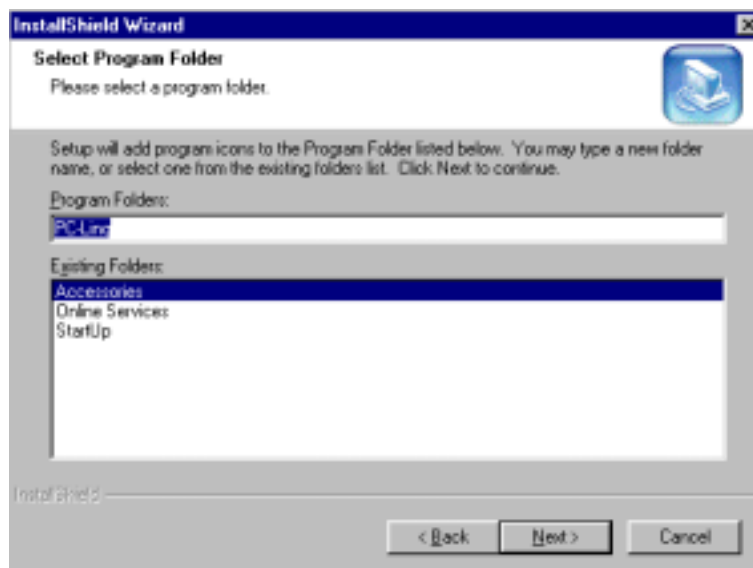


Figure 8

USER MANUAL for USB Data Link

9. Then you will see the PC-Linq shortcut on the table. As shown in Figure 9.

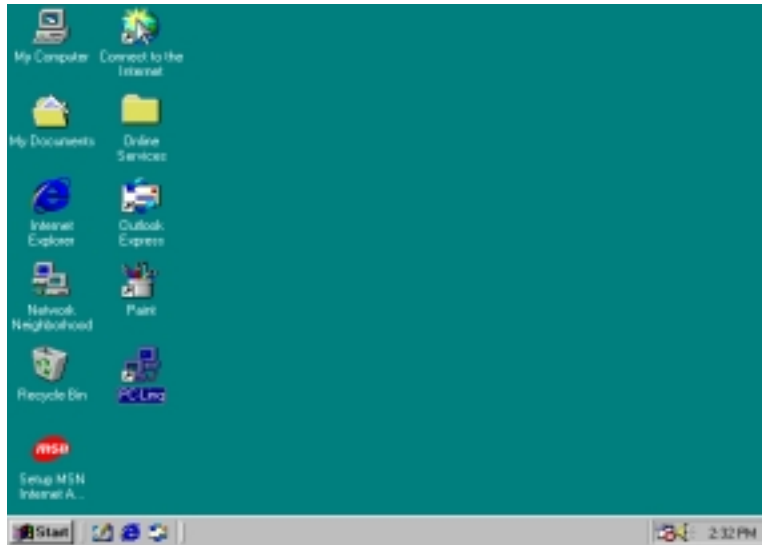


Figure 9

10. After installation, you may check in the Device Manager under System Properties. If you see “USB Bridge Cable” under Universal Serial Bus controllers, it means the installation is done successfully. See Figure 10.

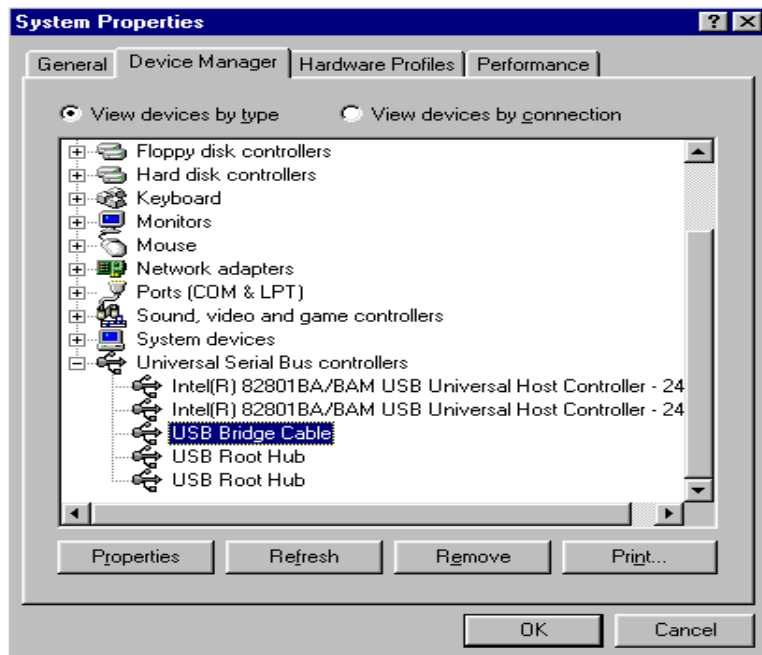


Figure 10

USER MANUAL for USB Data Link

11. Then you can see the “Local Machine” & ”Remote Machine” windows and start transferring data between the two connected PCs. See Figure 11.

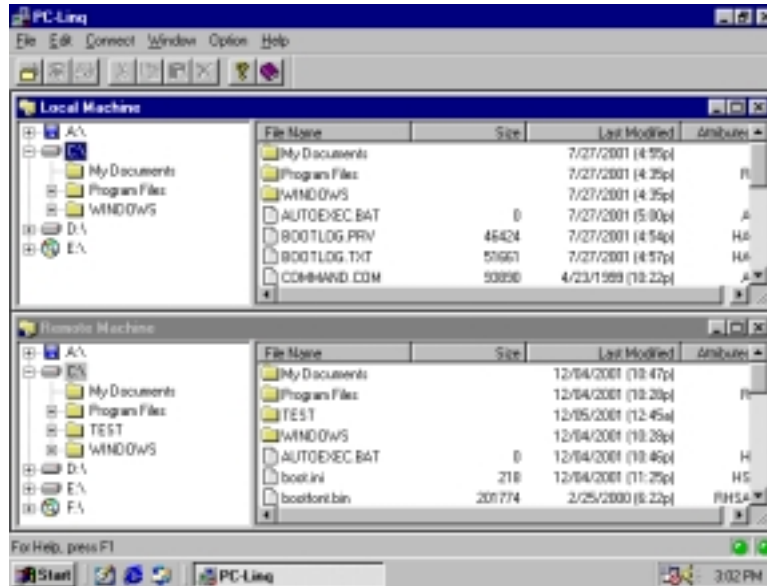


Figure 11

USER MANUAL for USB Data Link

Driver Installation Under Win 2000 / XP

1. See the Welcome window as Figure 1. Click **Next**.



Figure 1

2. Select "Search for a suitable driver for my device (recommended)" as Figure 2. Click **Next**.

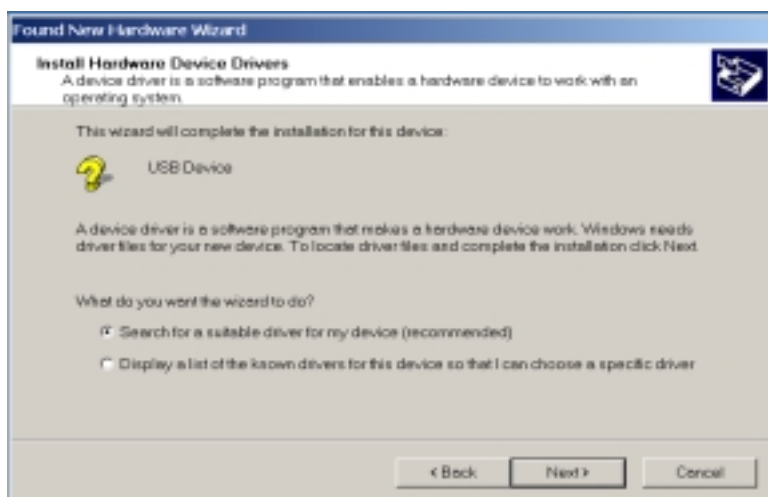


Figure 2

USER MANUAL for USB Data Link

3. See Locate Driver Files window as Figure 3. Select “Specify a location”. Click **Next**.

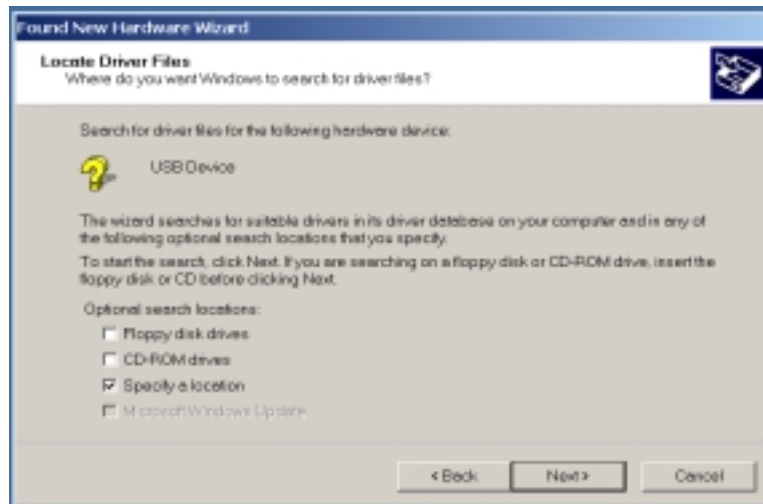


Figure 3

4. **Browse** for the “USBBC” file under PC Data Link driver(V.1.6) folder in the driver. Click **Open**.

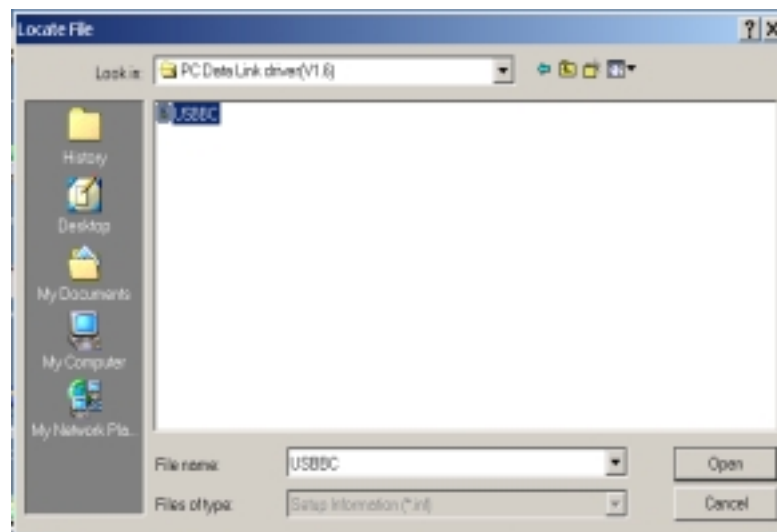


Figure 4

USER MANUAL for USB Data Link

5. Back to “Found New Hardware Wizard” as Figure 5 and click **OK**.

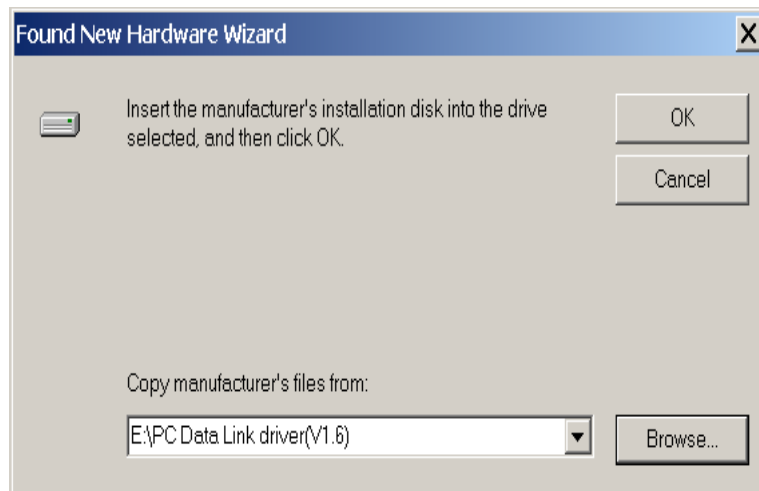


Figure 5

6. The “Driver Files Search Results” window show up as Figure 6. Click **Next**.

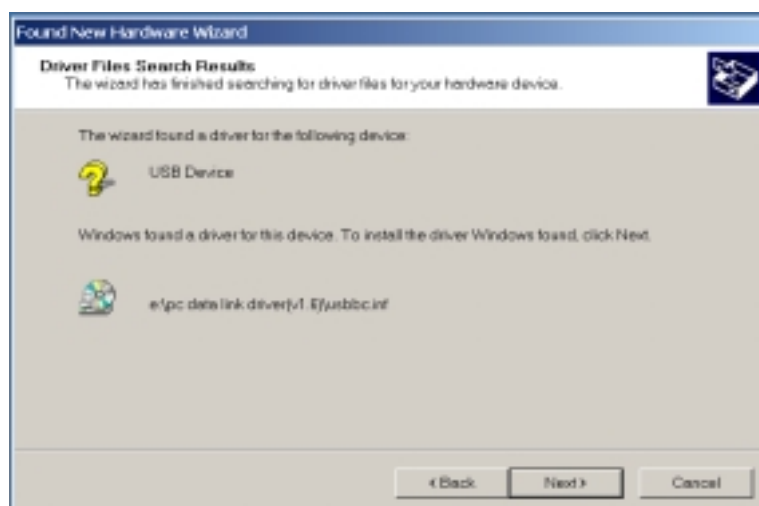


Figure 6

USER MANUAL for USB Data Link

7. See the “Completing the Found New Hardware Wizard” as Figure 7. Click **Finish**.

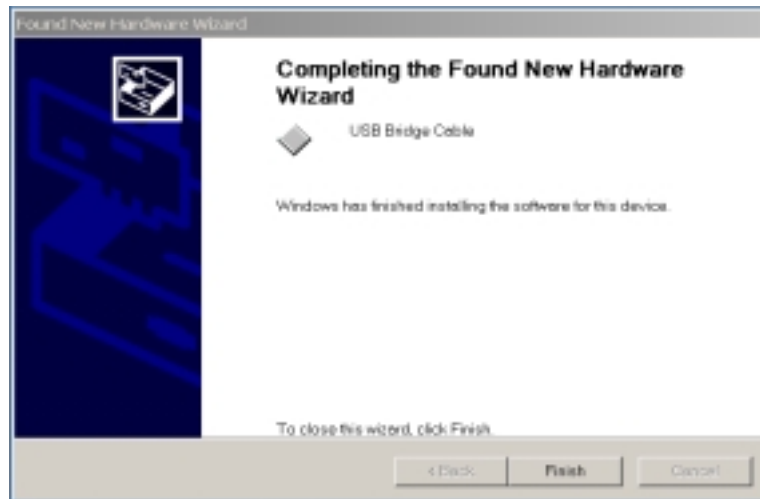


Figure 7

8. After step 5, the welcome page of InstallShield Wizard shows up right away, as Figure 8. Click **Next**.
- 9.

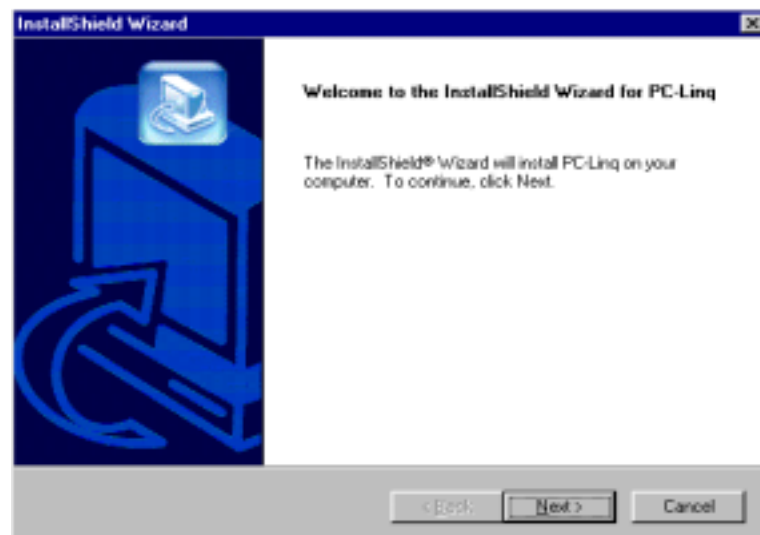


Figure 8

USER MANUAL for USB Data Link

10. The “Choose Destination Location” window appears, as Figure 9. Normally the Destination Folder will be “C:\Program Files\PC-Linq”. Click **Next**.

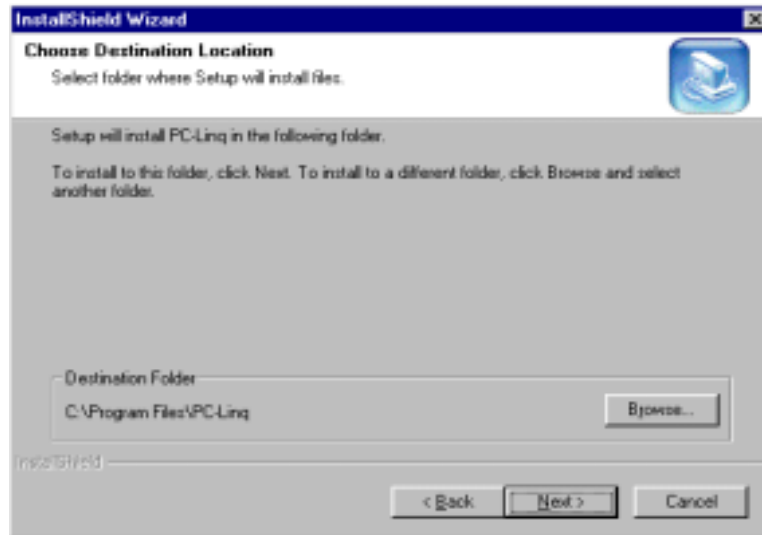


Figure 9

11. As Figure 10, the default Program Folders will be “PC-Linq”. If you choose the default “Accessories” as Existing Folders, and click **Next**, you will be able to find the PC-Linq file in the Programs folder when you click “Start” at the table of your computer.

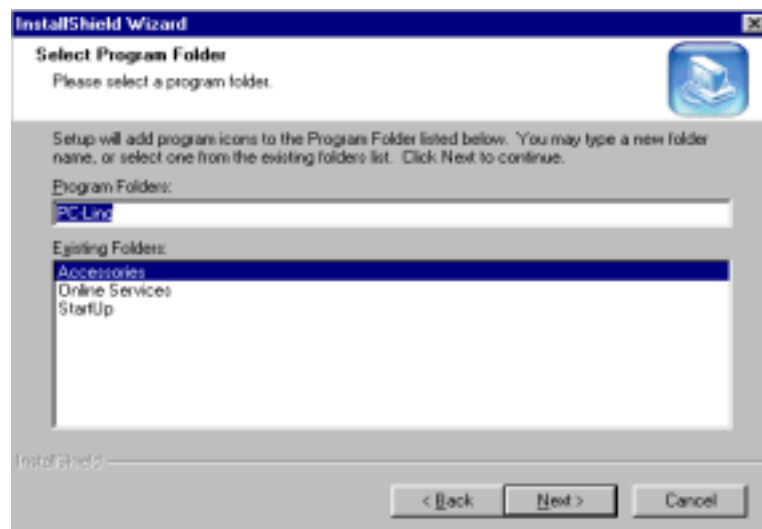


Figure 10

USER MANUAL for USB Data Link

12. Then you will see the PC-Linq shortcut on the table. As shown in Figure 11.

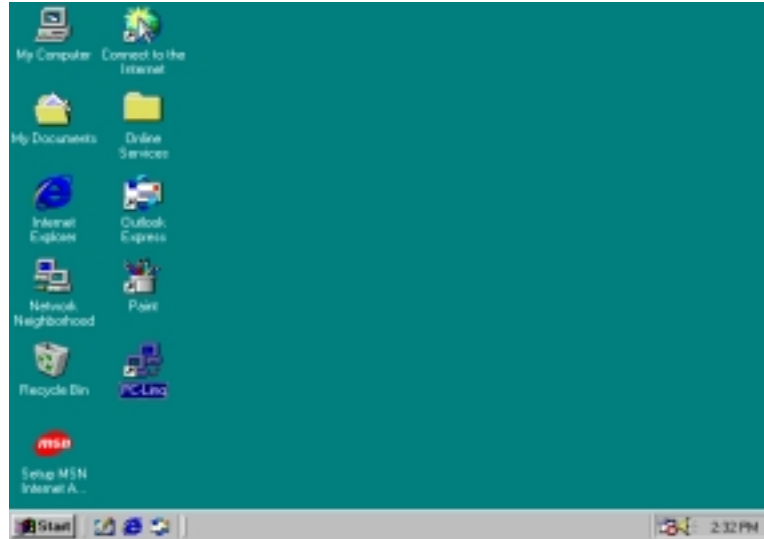


Figure 11

13. After installation, you may check in the Device Manager under System Properties. If you see “USB Bridge Cable” under Universal Serial Bus controllers, it means the installation is done successfully. See Figure 12.

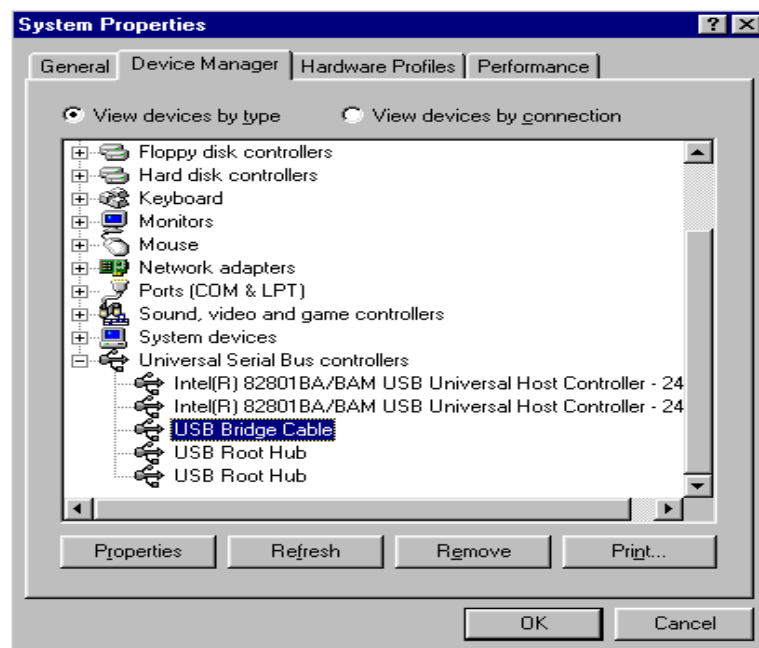


Figure 12

USER MANUAL for USB Data Link

14. Then you can see the “Local Machine” & ”Remote Machine” windows and start transferring data between the two connected PCs. See Figure 13.

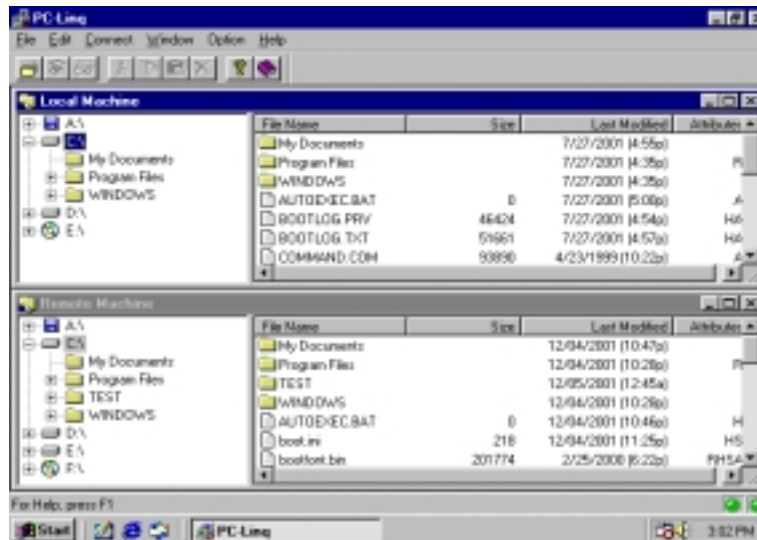


Figure 13